

# 2020-2021 TIMEPIECE COLLECTION



FINE SWISS QUARTZ TIMEPIECES



# THE COLLECTION

Our timepieces are manufactured to the highest standards of Swiss technology and precision. By insisting on only the finest component parts, we are able to guarantee that each timepiece is a product of impeccable quality and value.

All watches are covered by a three-year limited warranty, which starts the day the watch is purchased and registered. Our luxurious packaging and displays are elegant and functional. This is truly our finest, best priced collection ever, and represents the culmination of over 75 years of watch making experience.



## **SWISS MOVEMENT**

Every watch has been assembled from Swiss parts, and is guaranteed to be accurate to within one minute per year.



## **STAINLESS STEEL AND PVD PLATING**

We only use surgical quality stainless steel and state-of-the-art plating technology. PVD deposits of gold and a TiN (Titanium Nitrate) alloy permeate and harden the stainless steel. The plating will wear equivalent to 5-10 microns of traditional galvanic gold plating.



## **GENUINE SAPPHIRE CRYSTAL**

Every watch features a genuine sapphire crystal. A sapphire crystal is extremely strong, both shatter and scratch resistant, making it the top choice for a fine timepiece.



## **WATER RESISTANT**

Tested with state-of-the-art equipment, under both pressure and vacuum, to ensure protection against water and humidity.

**3 ATM** = Water tested to 30 meters/100 feet

**5 ATM** = Water tested to 50 meters/165 feet

**10 ATM** = Water tested to 100 meters/330 feet

# CONTENTS

Classic Timepieces	E2	Seapearl Star Chrono	E36
Multi-Strap	E26	Swiss Quartz Chrono	E38
Savonette Pocket Watch	E28	14 Karat Gold	E42
Seapearl 300 Series	E30	Packaging	E44
Seapearl Star Series	E32	Custom Dials & Engraving	E46





# CLASSIC TIMEPIECES

**A4320W/M-WHT***MSRP: \$195***A4320Y/M-BLK***MSRP: \$285***A4320Y/M-WHT***MSRP: \$285***A4420W/M-WHT***MSRP: \$195***A4420Y/M-BLK***MSRP: \$285***A4420Y/M-WHT***MSRP: \$285*



**A4320W/S-WHT/BLK**

MSRP: \$195



**A4420W/S-WHT/BLK**

MSRP: \$195



Elegant profile on models A4320 & A4420.



**A4320Y/S-WHT/BLK**

MSRP: \$225



**A4420Y/S-WHT/BLK**

MSRP: \$225



**A4320Y/S-BLK/BRN**

MSRP: \$225



**A4420Y/S-BLK/BRN**

MSRP: \$225

## A4320

Gents, 3 ATM, Stainless steel case, Genuine sapphire crystal, Case diameter: 40mm

/M: Stainless steel mesh bracelet

/S: Genuine leather strap

## A4420

Ladies, 3 ATM, Stainless steel case, Genuine sapphire crystal, Case diameter: 30mm

/M: Stainless steel mesh bracelet

/S: Genuine leather strap

## MOTHER-OF-PEARL DIAL

**A4287W/S-LIT**

MSRP: \$225

**A4287W/B-LIT**

MSRP: \$285

**A4287W/M-LIT**

MSRP: \$210

**A4287**

Ladies, 3 ATM, Stainless steel case, Genuine sapphire crystal,  
Genuine mother-of-pearl dial, Case diameter: 30.2 mm

/B: Stainless steel bracelet, Deployment buckle

/M: Stainless steel mesh bracelet

/S: Genuine leather strap

## MOTHER-OF-PEARL DIAL

**A4287Y/S-LIT**

MSRP: \$255

**A4287Y/B-LIT**

MSRP: \$375

**A4287Y/M-LIT**

MSRP: \$300





A4287W/M-MBLU

MOTHER-OF-PEARL DIAL



**A4287W/S-MBLU**  
MSRP: \$225



**A4287W/B-MBLU**  
MSRP: \$285



**A4287W/M-MBLU**  
MSRP: \$210



A4408W/B-GRY



A4408W/B-GRY

MSRP: \$375



A4408W/B-WHT

MSRP: \$375



A4408W/B-BLU

MSRP: \$375





**A4408T/B-GRY**  
MSRP: \$435



**A4408T/B-WHT**  
MSRP: \$435



**A4408T/B-BLU**  
MSRP: \$435

## A4408

Gents, 10 ATM, Stainless steel case, Stainless steel bracelet, Diver security lock buckle, Screw down crown, Genuine sapphire crystal with lens, Luminous dial and hands, Case diameter: 43 mm



Swiss Super LumiNova highly luminous dial and hands on model A4408.



**A4408T/B-CHA**  
MSRP: \$435

A4218W/B-PIN



MOTHER-OF-PEARL DIAL



**A4218T/B-SIL**  
MSRP: \$420



**A4218T/B-GRE**  
MSRP: \$420



**A4218T/B-WHT**  
MSRP: \$420



**A4218T/B-LIT**  
MSRP: \$450





**A4218W/B-PIN**  
MSRP: \$345



**A4218W/B-SIL**  
MSRP: \$345



**A4218W/B-GRE**  
MSRP: \$345



**A4218W/B-WHT**  
MSRP: \$345

MOTHER-OF-PEARL DIAL



**A4218W/B-LIT**  
MSRP: \$375

## A4218

Ladies, 10 ATM, Stainless steel case, Stainless steel bracelet, Diver security lock buckle, Screw down crown, Genuine sapphire crystal with lens, Genuine mother-of-pearl dial on **LIT** models, Case diameter: 29.8 mm



**A4218Y/B-CHA**  
MSRP: \$420



**A4218Y/B-GRE**  
MSRP: \$420



**A4218Y/B-WHT**  
MSRP: \$420

MOTHER-OF-PEARL DIAL



**A4218Y/B-LIT**  
MSRP: \$450



MOTHER-OF-PEARL DIAL



**A4718T/B-LIT**  
MSRP: \$555



**A4718W/B-LIT**  
MSRP: \$480



**A4718Y/B-LIT**  
MSRP: \$555

## A4718

Ladies, 10 ATM, 11 genuine diamonds, Stainless steel case, Stainless steel bracelet, Diver security lock buckle, Screw down crown, Genuine sapphire crystal with lens, Genuine mother-of-pearl dial on **LIT** models, Case diameter: 29.8 mm



**A8060T-WHT**  
MSRP: \$285

**A8060T-BLK**  
MSRP: \$285

## A8060

Ladies, 3 ATM, Stainless steel case, Stainless steel bracelet, Genuine sapphire crystal, Case diameter: 23 mm



**A4718T/B-BLK**  
MSRP: \$525



**A4718W/B-BLK**  
MSRP: \$450



**A4718Y/B-BLK**  
MSRP: \$525

A4282W-WHT



SWAROVSKI CRYSTAL ACCENTS  
MOTHER-OF-PEARL DIAL



**A4282W-WHT**  
MSRP: \$270



**A4282W-BLU**  
MSRP: \$270



**A4282Y-WHT**  
MSRP: \$345



**A4282Y-DRK**  
MSRP: \$345

## A4282

Ladies, 3 ATM, Swarovski crystal accents (52 cement set crystals), Stainless steel case, Stainless steel bracelet, Fold over push-button buckle, Genuine mother-of-pearl dial, Genuine sapphire crystal, Case diameter: 33.5 mm





A4186W/NS-BLK



A4186W/NS-BLK  
MSRP: \$270



A4186W/NS-BLK/BRN  
MSRP: \$270

## A4186

Unisex, 5 ATM, Stainless steel case, Soft leather inlaid rubber strap, Luminous dial and hands, Genuine sapphire crystal, Black IP plating on BK model, Case diameter: 40 mm





**A4186Y/NS-BLK**  
MSRP: \$300



**A4186Y/NS-BLK/BRN**  
MSRP: \$300



**A4186BK/NS-BLK**  
MSRP: \$300



**A4186BK/NS-BLK/BRN**  
MSRP: \$300



Soft leather inlaid rubber strap  
on model A4186.



Swiss Super LumiNova highly luminous  
dial and hands on model A4186.



**A4330W-WHT**  
MSRP: \$270



**A4330T-CHA**  
MSRP: \$360



**A4330T-WHT**  
MSRP: \$360



**A4330Y-CHA**  
MSRP: \$360



**A4330Y-WHT**  
MSRP: \$360

## A4330

Unisex, 10 ATM, Stainless steel case, Stainless steel bracelet, Diver security lock buckle, Genuine sapphire crystal, Case diameter: 34 mm

## A4331

Gents, 10 ATM, Stainless steel case, Stainless steel bracelet, Diver security lock buckle, Genuine sapphire crystal, Case diameter: 41 mm



**A4331W-WHT**  
MSRP: \$285



**A4331Y-CHA**  
MSRP: \$375



**A4331Y-WHT**  
MSRP: \$375





A4331T-BLK



**A4331T-CHA**  
MSRP: \$375



**A4331T-BLK**  
MSRP: \$375



**A4331T-WHT**  
MSRP: \$375





Swiss Super LumiNova highly luminous dial and hands on models A4152 and A4252.

A4152Y/X-FF & A4252Y/X-FF

EXPANSION BAND



**A4152W/X-FF**  
MSRP: \$210

EXPANSION BAND



**A4252W/X-FF**  
MSRP: \$210

EXPANSION BAND



**A4252Y/X-FF**  
MSRP: \$270

EXPANSION BAND



**A4152Y/X-FF**  
MSRP: \$270



**A4152W/S-FF**  
MSRP: \$210



**A4252W/S-FF**  
MSRP: \$210



**A4252Y/S-FF**  
MSRP: \$240



**A4152Y/S-FF**  
MSRP: \$240

## A4152

Gents, 3 ATM, Stainless steel case, Genuine sapphire crystal, Luminous dial and hands, Case diameter: 35 mm

/S: Genuine leather strap

/X: Stainless steel expansion band

## A4252

Ladies, 3 ATM, Stainless steel case, Genuine sapphire crystal, Luminous dial and hands, Case diameter: 24.5 mm

/S: Genuine leather strap

/X: Stainless steel expansion band

EXPANSION BAND



**A171/62Y/X**  
MSRP: \$210



**A171/62W/X**  
MSRP: \$150

## A171

Ladies, 3 ATM, Stainless steel case, Stainless steel expansion band, Genuine sapphire crystal, Case diameter: 19 mm



**A4152Y/S-WHT**  
MSRP: \$240



**A4252Y/S-WHT**  
MSRP: \$240



**A4252Y/S-CHA**  
MSRP: \$240



**A4152Y/S-CHA**  
MSRP: \$240



**A4152W/S-WHT**  
MSRP: \$210



**A4252W/S-WHT**  
MSRP: \$210



EXPANSION BAND



**A4152W/X-WHT**  
MSRP: \$210

EXPANSION BAND



**A4252W/X-WHT**  
MSRP: \$210

EXPANSION BAND



**A4252Y/X-CHA**  
MSRP: \$270

EXPANSION BAND



**A4152Y/X-CHA**  
MSRP: \$270

## A4152

Gents, 3 ATM, Stainless steel case, Genuine sapphire crystal, Case diameter: 35 mm

/S: Genuine leather strap

/X: Stainless steel expansion band

## A4252

Ladies, 3 ATM, Stainless steel case, Genuine sapphire crystal, Case diameter: 24.5 mm

/S: Genuine leather strap

/X: Stainless steel expansion band



**A4152W/S-ROM**  
MSRP: \$210



**A4252W/S-ROM**  
MSRP: \$210



**A4252Y/S-ROM**  
MSRP: \$240



**A4152Y/S-ROM**  
MSRP: \$240



**A4508Y-BLK**  
MSRP: \$420



**A4208Y-BLK**  
MSRP: \$420



**A4508Y-WHT**  
MSRP: \$420



**A4208Y-WHT**  
MSRP: \$420



**A4508Y-CHA**  
MSRP: \$420



**A4208Y-CHA**  
MSRP: \$420



**A4508W-WHT**  
MSRP: \$360



**A4208W-WHT**  
MSRP: \$360



Swiss Super LumiNova highly luminous dial and hands on models A4208 and A4508.





**A4508T-BLU**  
MSRP: \$420



**A4208T-BLU**  
MSRP: \$420



**A4208T-BLK**  
MSRP: \$420



**A4508T-BLK**  
MSRP: \$420

## A4208

Ladies, 10 ATM, Stainless steel case, Stainless steel bracelet, Diver security lock buckle, Genuine sapphire crystal with lens, Luminous dial and hands, Case diameter: 24 mm

## A4508

Gents, 10 ATM, Stainless steel case, Stainless steel bracelet, Diver security lock buckle, Genuine sapphire crystal with lens, Luminous dial and hands, Case diameter: 35.5 mm



**A4508T-CHA**  
MSRP: \$420



**A4208T-CHA**  
MSRP: \$420



**A4208T-WHT**  
MSRP: \$420



**A4508T-WHT**  
MSRP: \$420





A4702-LIT

MOTHER-OF-PEARL DIAL



A4702-LIT  
MSRP: \$540



A4702-DRK  
MSRP: \$540



A4602-BLK  
MSRP: \$510



A4702-BLK  
MSRP: \$510



A4702-CHA  
MSRP: \$510



A4602-CHA  
MSRP: \$510



**A4600-BLK**  
MSRP: \$510



**A4700-BLK**  
MSRP: \$510



**A4700-CHA**  
MSRP: \$510



**A4600-CHA**  
MSRP: \$510

MOTHER-OF-PEARL DIAL



**A4700-LIT**  
MSRP: \$540

## A4600, A4602

Gents, 10 ATM, 11 genuine diamonds, Stainless steel case, Stainless steel bracelet, Diver security lock buckle, Genuine sapphire crystal with lens, Case diameter: 35.5 mm

## A4700, A4702

Ladies, 10 ATM, 11 genuine diamonds, Stainless steel case, Stainless steel bracelet, Diver security lock buckle, Genuine sapphire crystal with lens, Genuine mother-of-pearl dial on **LIT** and **DRK** models, Case diameter: 24 mm

MOTHER-OF-PEARL DIAL



**A4600W-BLK**  
MSRP: \$435



**A4700W-BLK**  
MSRP: \$435



**A4700W-LIT**  
MSRP: \$465



**A4700W-DRK**  
MSRP: \$465





**A9516Y-CHA**  
MSRP: \$360



**A9416Y-CHA**  
MSRP: \$360



**A9416Y-WHT**  
MSRP: \$360



**A9516Y-WHT**  
MSRP: \$360



Swiss Super LumiNova highly luminous dial and hands on models A9416 and A9516.



Bi-fold push-button deployment buckle models on A9416 and A9516.

## A9416

Ladies, 10 ATM, Stainless steel case, Stainless steel bracelet, Bi-fold push-button deployment buckle, Genuine sapphire crystal, Luminous dial and hands, Case diameter: 26 mm

## A9516

Gents, 10 ATM, Stainless steel case, Stainless steel bracelet, Bi-fold push-button deployment buckle, Genuine sapphire crystal, Luminous dial and hands, Case diameter: 36.5 mm





**A9516T-CHA**  
MSRP: \$360



**A9516T-BLU**  
MSRP: \$360



**A9516T-WHT**  
MSRP: \$360



**A9416T-CHA**  
MSRP: \$360



**A9416T-WHT**  
MSRP: \$360



**A9516W-BLK**  
MSRP: \$255



**A9416W-BLK**  
MSRP: \$255



**A9416W-WHT**  
MSRP: \$255



**A9516W-WHT**  
MSRP: \$255

# MULTI-STRAP



Each Multi-Strap watch includes 3 interchangeable straps and comes packaged in a mahogany finished wooden box as shown.







3 INTERCHANGEABLE  
STRAPS INCLUDED



Black



Red



Grey

**A4420W/MS-WHT**

MSRP: \$285

## A4420/MS

Ladies, 3 ATM, Stainless steel case, 3 interchangeable genuine leather straps, Genuine sapphire crystal, Case diameter: 30mm

MOTHER-OF-PEARL DIAL



3 INTERCHANGEABLE  
STRAPS INCLUDED



Black



Red



Grey

**A4287W/MS-LIT**

MSRP: \$315

## A4287/MS

Ladies, 3 ATM, Stainless steel case, 3 interchangeable genuine leather straps, Genuine sapphire crystal, Genuine mother-of-pearl dial, Case diameter: 30.2 mm



*Easily change straps using the special spring hinge on the back of the strap.*

## CHOOSE YOUR OWN 3 STRAPS

Swap out any of the included standard straps with the alternative straps below.

### STANDARD STRAPS

Slim & smooth calf leather



Black



Red



Grey

### ALTERNATE STRAPS

Padded croco grain leather



Amethyst



Lime



Pink



Ocean



Tangerine



Lavender





# SAVONETTE POCKET WATCH

The ultimate 100% water-resistant Savonette Pocket Watch. These stainless steel classics are uniquely designed to resist both dust and water (5 ATM tested).



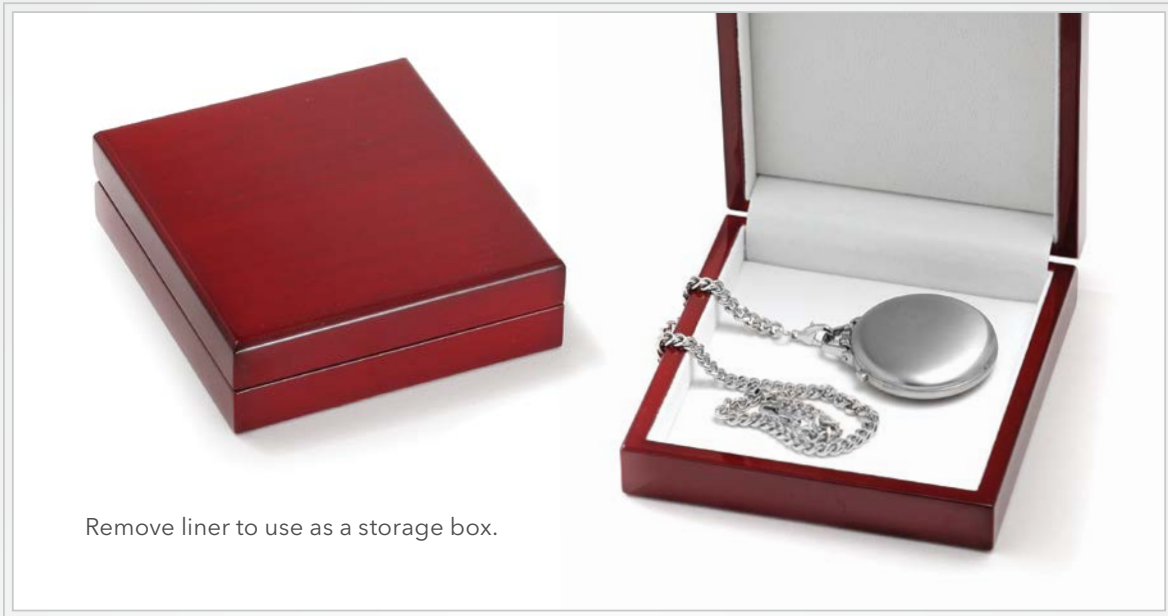
**A1615W**  
MSRP: \$525



**A1615Y**  
MSRP: \$630

## **A1615**

Gents, 5 ATM, Stainless steel case,  
Genuine sapphire crystal, 12 inch chain,  
Case diameter: 48 mm



## POCKET WATCH GIFT BOX

Perfectly suited for gift giving, each pocket watch comes in this elegantly appointed wooden box which doubles as a jewelry storage box.

# SEAPEARL 300 SERIES



A8830T/TB-BLK



**A8830W/B-BLK**  
MSRP: \$375



**A8830W/RU-BLK**  
MSRP: \$330



**A8830T/TB-BLK**  
MSRP: \$450





Swiss Super LumiNova highly luminous dial and hands on model A8830.



**A8830T/RU-BLU**  
MSRP: \$360



**A8830T/TB-BLU**  
MSRP: \$450



**A8830T/RU-BLK**  
MSRP: \$360



Antique shaped screw down crown on model A8830.

## A8830

Gents, 10 ATM, 10 year lithium battery, Stainless steel case, One-directional rotating diver bezel, Screw down diver crown, Luminous dial and hands, Genuine sapphire crystal, Case diameter: 44.3 mm

/B: Stainless steel bracelet, Diver security lock buckle

/RU: Custom molded rubber strap

/TB: Stainless steel bracelet, Diver security lock buckle



**A8830W/B-BLU**  
MSRP: \$375



**A8830W/RU-BLU**  
MSRP: \$330

# SEAPEARL STAR SERIES



A9324BK/B-CAR

CARBON FIBER DIAL



A9324BK/RU-CAR

MSRP: \$390

CARBON FIBER DIAL



A9324BK/B-CAR

MSRP: \$480

CARBON FIBER DIAL



A9324T/B-CAR

MSRP: \$480





**A9324T/B-BLK**  
MSRP: \$450



**A9424T/B-BLK**  
MSRP: \$450



**A9424T/B-BLU**  
MSRP: \$450



**A9324T/B-BLU**  
MSRP: \$450

## A9324

Gents, 10 ATM, Stainless steel case, One-directional rotating diver bezel, Screw down diver crown, Luminous dial and hands, Genuine sapphire crystal with lens, Carbon fiber dial on **CAR** model, Black IP plating on **BK** model, Grey IP plating on **GR** model, Case diameter: 46.7 mm

/B: Stainless steel bracelet, Diver security lock buckle

/RU: Custom molded rubber strap

## A9424

Ladies, 10 ATM, Stainless steel case, Stainless steel bracelet, Diver security lock buckle, One-directional rotating diver bezel, Screw down diver crown, Luminous dial and hands, Genuine sapphire crystal with lens, Case diameter: 30 mm



Swiss Super LumiNova highly luminous dial and hands on models A9324 & A9424.



**A9324GR/B-GRE**  
MSRP: \$450





**A9324W/B-BLK**  
MSRP: \$360



**A9424W/B-BLK**  
MSRP: \$360



**A9424W/B-BLU**  
MSRP: \$360



**A9324W/B-BLU**  
MSRP: \$360

CARBON FIBER DIAL



**A9324W/B-CAR**  
MSRP: \$390

CARBON FIBER DIAL



**A9324W/RU-CAR**  
MSRP: \$345

## A9324W

Gents, 10 ATM, Stainless steel case, One-directional rotating diver bezel, Screw down diver crown, Carbon fiber dial on **CAR** model, Luminous dial and hands, Genuine sapphire crystal with lens, Case diameter: 46.7 mm

/B: Stainless steel bracelet, Diver security lock buckle  
/RU: Custom molded rubber strap

## A9424W

Ladies, 10 ATM, Stainless steel case, Stainless steel bracelet, Diver security lock buckle, One-directional rotating diver bezel, Screw down diver crown, Luminous dial and hands, Genuine sapphire crystal with lens, Case diameter: 30 mm



**A9324W/RU-BLU/BLU**  
MSRP: \$315



**A9324W/RU-BLU/YEL**  
MSRP: \$315



Swiss Super LumiNova highly luminous dial  
and hands on models A9324 & A9424.



**A9324W/RU-BLK/BLK**  
MSRP: \$315



**A9324W/RU-BLK/RED**  
MSRP: \$315

# SEAPEARL STAR CHRONO



A9824W/RU-BLK/BLK



Swiss Super LumiNova highly luminous  
dial and hands on model A9824.



A9824W/RU-BLK/RED

MSRP: \$435



A9824W/RU-BLK/BLK

MSRP: \$435





**A9824W/B-BLU**  
MSRP: \$495



**A9824W/S-BLU**  
MSRP: \$510



**A9824W/RU-BLU/YEL**  
MSRP: \$435



**A9824W/RU-BLU/BLU**  
MSRP: \$435

## A9824

Gents, 10 ATM, Swiss chronograph, Stainless steel case, One-directional rotating diver bezel, Screw down diver crown, Luminous dial and hands, Genuine sapphire crystal with lens, 30 minute register and 1/10 second counter, Case diameter: 43 mm

/B: Stainless steel bracelet, Diver security lock buckle

/RU: Custom molded rubber strap

/S: Genuine leather strap, Dual push-button release deployment buckle



Dual push-button release deployment buckle on model A9824/S.



**A9824W/S-BLK**  
MSRP: \$510



**A9824W/B-BLK**  
MSRP: \$495

# SWISS QUARTZ CHRONO



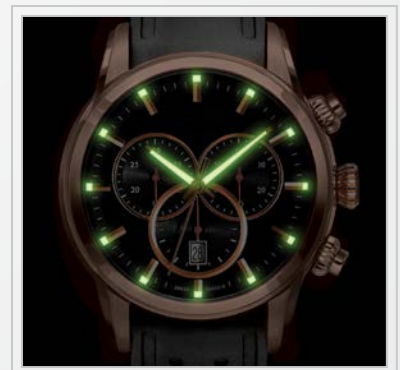
A9830R/S-BRN



Domed genuine sapphire crystal  
on model A9830R.



Dual push-button release deployment  
buckle on model A9830R/S.



Swiss Super LumiNova highly luminous  
dial and hands on model A9830.





**A9830R/S-BRN**

MSRP: \$585



**A9830R/S-BLK**

MSRP: \$585



**A9830R/RU-BLK**

MSRP: \$525

## A9830R

Gents, 10 ATM, Swiss chronograph, Stainless steel case, Luminous dial and hands, Genuine sapphire crystal, Rose gold elements, 30 minute register and 1/10 second counter, Rose gold plating, Case diameter: 45 mm

/RU: Custom molded rubber strap

/S: Genuine leather strap, Dual push-button release deployment buckle



**A9830R/S-BUR**

MSRP: \$585



**A9830R/S-BLU**

MSRP: \$585



**A9830R/RU-BLU**

MSRP: \$525





**A9830TR/B-BLU**  
MSRP: \$510



**A9830TR/S-BLU**  
MSRP: \$525



**A9830TR/RU-BLU**  
MSRP: \$465



Dual push-button release deployment buckle on model A9830TR/S.



Domed genuine sapphire crystal on model A9830TR.



**A9830TR/B-BUR**  
MSRP: \$510



**A9830TR/S-BUR**  
MSRP: \$525



Swiss Super LumiNova highly luminous dial and hands on model A9830.



**A9830TR/B-BLK**  
MSRP: \$510



**A9830TR/S-BLK**  
MSRP: \$525

## A9830TR

Gents, 10 ATM, Swiss chronograph, Stainless steel case, Luminous dial and hands, Genuine sapphire crystal, Rose gold elements, 30 minute register and 1/10 second counter, Case diameter: 45 mm

/B: Stainless steel bracelet, Diver security lock buckle

/RU: Custom molded rubber strap

/S: Genuine leather strap, Dual push-button release deployment buckle



**A9830TR/B-BRN**  
MSRP: \$510



**A9830TR/S-BRN**  
MSRP: \$525



**A9830TR/RU-BLK**  
MSRP: \$465



The image features two ultra-slim 14 karat gold watches with dark leather straps. The watches are positioned diagonally across the frame, with the larger one on the left and the smaller one on the right. Both have round, polished gold cases and light-colored, textured dials with simple stick markers for the hours. The leather straps have a crocodile or alligator pattern. The background is a dark, gradient red. The text 'ULTRA SLIM 14 KARAT GOLD' is centered in a white serif font.

# ULTRA SLIM 14 KARAT GOLD

Our very affordable solid 14 Karat gold watches are wafer thin (under 5 mm total thickness).

Please call to confirm prices, as they will fluctuate with the price of gold.





**A1484-CHA/BLK**  
CALL FOR MSRP



**A1494-CHA/BLK**  
CALL FOR MSRP



Side view of model A1484.



**A1484-WHT/BLK**  
CALL FOR MSRP



**A1484-CHA/COG**  
CALL FOR MSRP



**A1484-WHT/COG**  
CALL FOR MSRP

## A1484

Gents, 14 Karat gold, 3 ATM, Genuine leather strap, Genuine sapphire crystal, Case diameter: 34 mm

## A1494

Ladies, 14 Karat gold, 3 ATM, Genuine leather strap, Genuine sapphire crystal, Case diameter: 23.5 mm



**A1494-WHT/BLK**  
CALL FOR MSRP



**A1494-CHA/COG**  
CALL FOR MSRP



**A1494-WHT/COG**  
CALL FOR MSRP

# FINE TIMEPIECE PACKAGING

All timepieces will arrive in an elegant gift box.



## STANDARD GIFT BOX

**GBOX** Velour-lined, paper gift box.  
(included with wristwatch purchase)



## POCKET WATCH GIFT BOX

See page E29 for details.



## MULTI-STRAP GIFT BOX

See page E26 for details.





## — GIFT BOX UPGRADE —

### **WBC-2 Wood gift box**

*Upgrade MSRP: \$39.00*

*Sold separately MSRP: \$57.00*

We highly recommend that you consider upgrading your entire order to use our luxurious wood display box at a very nominal additional cost. This upgraded box not only serves as a very elegant presentation piece for your watch, but the box actually folds over to become a free standing display.

# CUSTOM DIALS

As a major producer of specialty logo watches, we are proud to supply you with corporate, longevity, and promotional award timepieces. Ideal for local companies, schools and organizations, our specialty watches are the perfect presentation item.



*Logo Printing*



*Die-Struck Medallion Dial*

## LOGO PRINTING

Perfect for corporate awards and promotions, logos can be printed on almost any of our watches. Our award winning pad printing can produce multiple spot colors with extreme precision. We now also offer 4-color process digital printing that produces full color images and gradients.

## DIE-STRUCK MEDALLION DIALS

When intricacy of detail and extreme high quality are required, a three dimensional die-struck Medallion watch is your most elegant choice. Our careful attention to detail ensures that the original artwork is crisp and accurate, so that the finished dial will meet all of your expectations.

# ENGRAVING

With our precision engraving capabilities, we can add a logo, name, or message to casebacks and metal watch bands. Take recognition and award timepieces to the next level through customization that is unique to each specific recipient.



*Straight-line engraving*



*Logo engraving*



*Engraving on buckle*



# MODEL INDEX

MODEL	PAGE
A1484	E42-E43
A1494	E42-E43
A1615	E28-E29
A171	E17
A4152	E16-E19
A4186	E12-E13
A4208	E20-E21
A4218	E8-E9

MODEL	PAGE
A4252	E16-E19
A4282	E11
A4287	E4-E5, E27
A4320	E2-E3
A4330	E14
A4331	E14-E15
A4408	E6-E7
A4420	E2-E3, E27

MODEL	PAGE
A4508	E20-E21
A4600	E23
A4602	E22
A4700	E23
A4702	E22
A4718	E10
A8060	E10
A8830	E30-E31

MODEL	PAGE
A9324	E32-E35
A9416	E24-E25
A9424	E33-E34
A9516	E24-E25
A9824	E36-E37
A9830	E38-E41



SHOWN: A9324W/B-BLK & A9424W/B-BLK

BACK COVER: A4287Y/B-LIT, A4287W/M-MBLU & A4287W/S-LIT





2020-2021  
TIMEPIECE COLLECTION

Fine Swiss Quartz Timepieces 